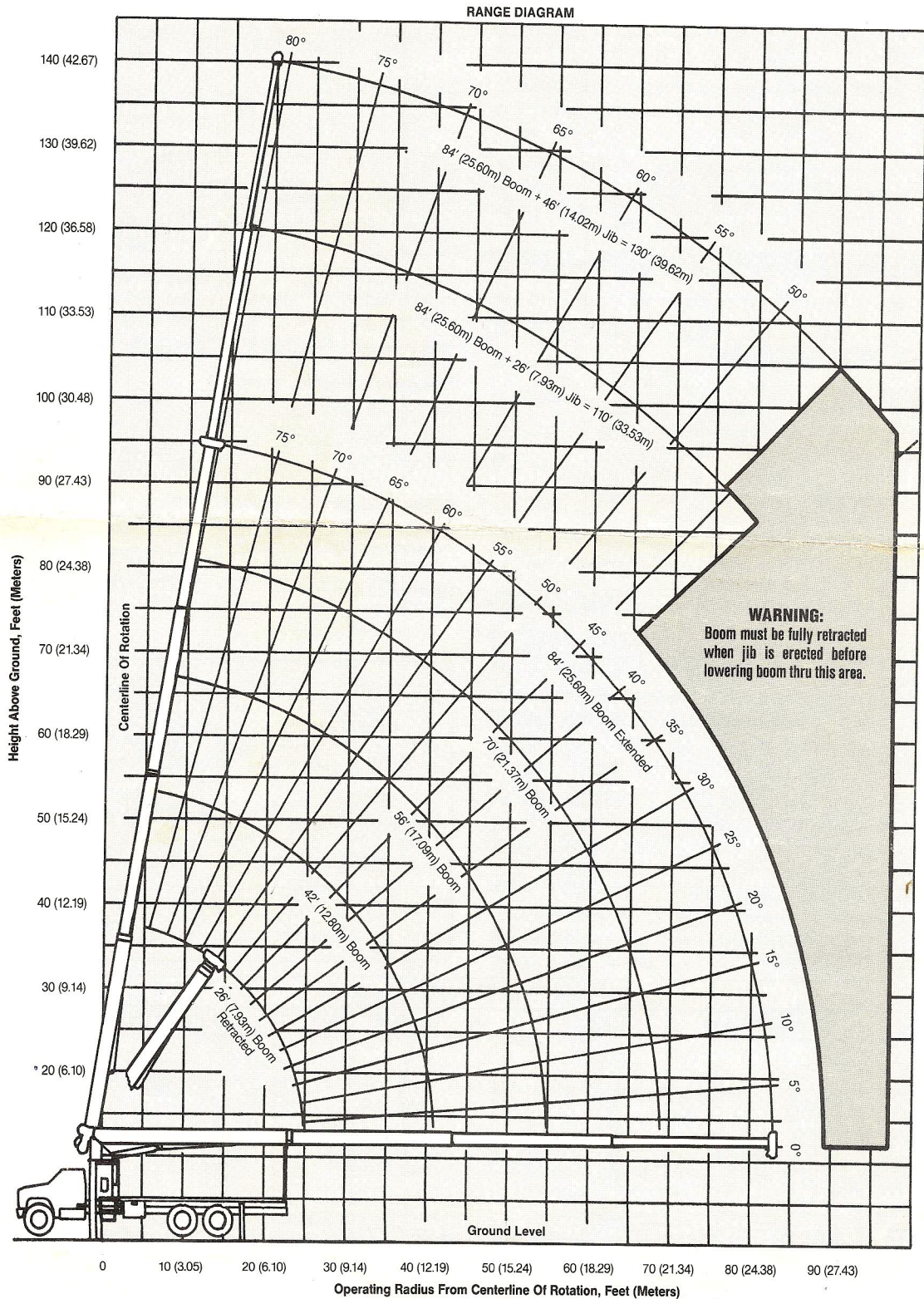




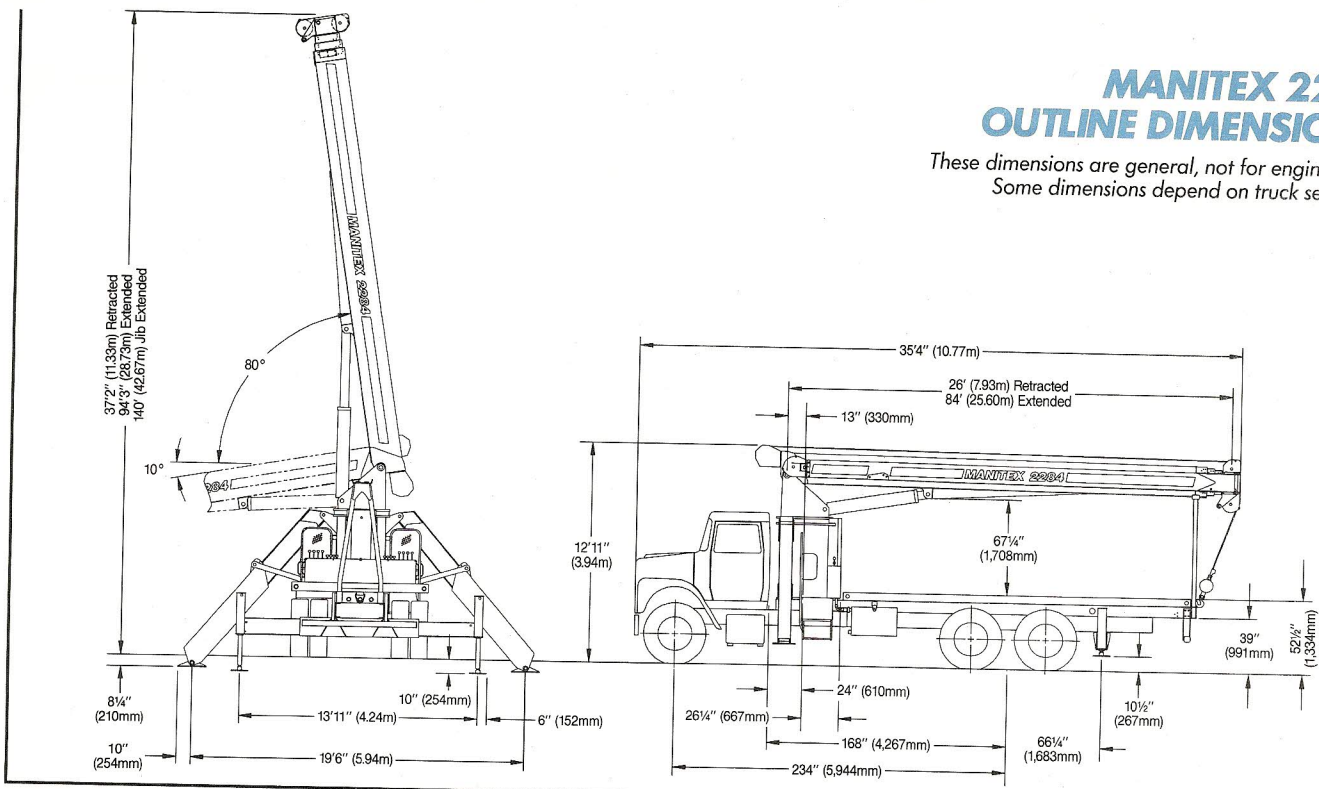
GENERAL SPECIFICATIONS

MODEL 2284 TRUCK-MOUNTED CRANE



MANITEX 2284 OUTLINE DIMENSIONS

These dimensions are general, not for engineering.
Some dimensions depend on truck selected.



STANDARD EQUIPMENT

- 4-section telescopic boom 26' (7.93m) to 84' (25.60m)
- Pedestal, turret, rotation bearing & swing system
- 20' (6.10m) subframe
- A-frame link-type outriggers
- Out-and-down rear stabilizers
- 3-sheave boom point
- Boom-hoist cylinder
- 2-speed planetary hoist
- Dual operator stations
- Removable boom rest
- 5-ton (4.5-mt) hook & ball
- 372° non-continuous rotation
- 56-gallon (212-liter) hydraulic reservoir
- 3-section vane-type hydraulic pump
- System pressure gauge
- Capacity-alert system, audio/visual
- Anti-two-block shutoff
- Audible outrigger/stabilizer motion alarm
- Back-up alarm
- Signal horn
- 300' (91.44m) of 3/16" (14.3mm) EIPS IWRC wire rope
- Finish paint in Manitex colors
- Operator/service/parts manuals

TRUCK CHASSIS DATA

Minimum Requirements:

Some configurations and options may increase requirements

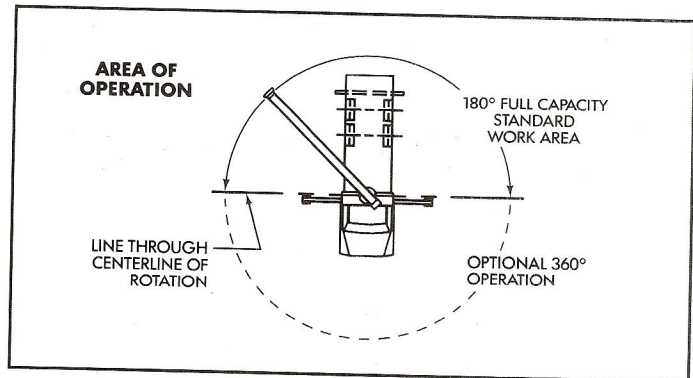
Wheelbase	234"	5,944mm
Cab to axle	168"	4,267mm
Front axle gross weight rating	14,000 lbs	6,350 kgs
Rear axle gross weight rating	38,000 lbs	17,237 kgs
Frame section modulus.....	20.0 in ³	328 cc
	110,000 psi	758,450 kPa
Nominal frame width	34"	864mm

WEIGHTS


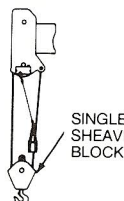
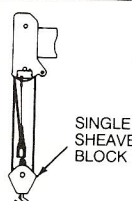
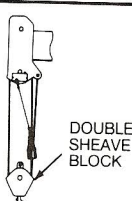
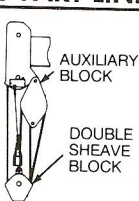

Total crane, including hydraulic fluid **Lbs. 19,200 Kgs. 8,709**

Additions:

26' (7.93m) fixed-length jib.....	819	372
46' (14.02m) telescopic jib	1,220	553
15-ton (13.6-mt) single-sheave block.....	263	119
25-ton (22.7-mt) triple-sheave block	380	172
Hanger sheave for 5- and 6-part line	38	17
20'4" (6.20m) steel or wood bed.....	1,900	862



ALLOWABLE LINE PULL

1-PART LINE	2-PART LINE	3-PART LINE	4-PART LINE	5-PART LINE	6-PART LINE
					
8,500 Lbs. (3,856 Kgs.) ¹ 7,400 Lbs. (3,357 Kgs.) ²	17,000 Lbs. (7,711 Kgs.) ¹ 14,800 Lbs. (6,713 Kgs.) ²	25,500 Lbs. (11,567 Kgs.) ¹ 22,200 Lbs. (10,070 Kgs.) ²	34,000 Lbs. (15,422 Kgs.) ¹ 29,600 Lbs. (13,426 Kgs.) ²	42,500 Lbs. (19,278 Kgs.) ¹ 37,000 Lbs. (16,783 Kgs.) ²	44,000 Lbs. (19,958 Kgs.) ¹ 44,000 Lbs. (19,958 Kgs.) ²

WARNING: Anti-two block system must be in good operating condition before operating crane. Refer to Owner's Manual. Keep at least 3 wraps of load line on drum at all times.

¹With 3/16" (14.3mm) 6 x 25 IWRC (3.5:1 S.F.) 29,750 Lbs. (13,494 Kgs.) Minimum Breaking Strength
²With 3/16" (14.3mm) Rotation Resistant (5.0:1 S.F.) 37,000 Lbs. (16,783 Kgs.) Minimum Breaking Strength

STANDARD SPECIFICATIONS AND FEATURES

BOOM—26' (7.93m) to 84' (25.60m). Inverted-T cross section. 4-section telescoping type, extended and retracted proportionally by double-acting hydraulic cylinder and cable-crowd system. Maximum tip height 94' (28.65m).

BOOM POINT—Three high-density nylon sheaves mounted on heavy-duty roller bearings. Two removable pin-type rope guards.

HOIST—Maximum line speed 247 fpm (75.25 mpm). Maximum bottom-layer line pull 12,000 lbs. (5,443 kgs). Two-speed planetary reducer. Spring-applied, pressure-released internal brake.

WIRE ROPE—300' (91.44m) of $\frac{9}{16}$ " (14.3mm) diameter 6 x 25 EIPS IWRC.

BOOM ELEVATION—Double-acting hydraulic cylinder. Working range from 10° below horizontal to 80° above.

SWING SYSTEM—Externally mounted, double-reduction planetary driven by hydraulic motor. Maximum swing speed 1.50 rpm. Wet multi-disc internal brake is spring applied, pressure released. Oversized diameter ball bearing swing circle with external gear. 372° non-continuous rotation.

OUTRIGGERS—8' (2.44m) retracted; 19'6" (5.94m) extended. A-frame link type. Operated independently for precise leveling. Equipped with double-acting hydraulic cylinders. 16" (406mm) x 20" (508mm) pivoting pads. 8 $\frac{1}{4}$ " (210mm) maximum rise.

STABILIZERS—8' (2.44m) retracted; 13'7" (4.14m) extended. Out-and-down type. Operated independently for precise leveling. Double-acting hydraulic cylinders. 12" (305mm) diameter pivoting pads. 9 $\frac{1}{4}$ " (235mm) maximum rise.

SUBFRAME—Torsionally resistant, rigid 4-plate design. Mounted under crane full length of truck frame.

REAR UNDERRIDE PROTECTION—Supplied on factory-mounted cranes. Fabricated structure mounted under rear of bed. Complies with Bureau Motor Carrier Safety standard 393.86.

BACK-UP ALARM—Supplied on factory-mounted cranes. Electronic audible motion alarm activated when truck transmission is in reverse gear.

MOUNTING—Pedestal and subframe are mounted to chassis by threaded rods and clamp plates. No welding, drilling, or bolting to truck.

CONTROL SYSTEM—Dual operator stations are equipped with 4 single-lever crane controls arranged to ANSI B30.5 standards. Fully proportional control valves and system pressure gauge. Each station also includes outrigger and stabilizer controls, engine start/stop, foot throttle, signal horn, overload gauges, boom-angle indicator, bubble levels, load chart and range diagram.

HYDRAULIC SYSTEM—A 3-section vane pump direct mounted to power takeoff on truck transmission provides 35 gpm (133 lpm) to the hoist, 8 gpm (30 lpm) to the swing circuit and 18 gpm (68 lpm) to other crane functions. 56-gallon (212-liter) baffled reservoir includes 10-micron filter in the return line. All fittings meet SAE standards and have O-ring face seals.

HYDRAULIC CYLINDERS—All are equipped with integral holding valves.

BOOM REST—Heavy-duty fabrication. Easily removed to simplify loading and unloading.

LOAD HOOK—5-ton (4.5-mt) capacity hook with heavy-duty swivel and weight is provided for single-line operation.

CAPACITY-ALERT SYSTEM—Monitors boom-hoist cylinder pressure. Color-coded gauge at each operator station and audible alarm indicate approaching overload. Optional shutdown system hydraulically prevents continuing overload.

ANTI-TWO-BLOCK SYSTEM—Audible warning and shutoff functions prevent hook from contacting boom point.

ELECTRICAL—12-volt direct current. Environmentally sealed enclosure.

DESIGN/WELDING—Design conforms to ANSI B30.5. Welding conforms to AWS D1.1.

MANUALS—Operator, service and parts manuals depict correct crane operation, maintenance procedures and parts listing.

WARRANTY—12-month warranty covers parts and labor resulting from defects in material or workmanship.

OPERATOR ASSIST FEATURES

- Anti-two-block warning and shutoff
- Capacity-alert system, audio/visual
- Load chart/range diagram
- Boom-angle indicator
- Audible outrigger/stabilizer motion alarm
- Engine start/stop
- Signal horn
- Back-up alarm

OPTIONS

FIXED SWING-AROUND JIB—26' (7.92m) fixed length. Stows along boom base. Maximum tip height 121' (36.88m).

TELESCOPIC SWING-AROUND JIB—Working lengths 26' (7.92m) and 46' (14.02m). Stows along boom base. Telescopic section stows inside jib base. Manually pinned in retracted or extended position. Maximum tip height 141' (42.98m).

BED—8' (2.44m) x 20'4" (6.20m). Deck of high-density hardwood or diamond steel tread plate. Cross sills on 12" (305mm) centers. Bolts to subframe.

- $\frac{9}{16}$ " (14.3mm) rotation-resistant wire rope
- Hook block for 2- to 6-part load line
- Hanger sheave for 5- and 6-part line
- Aerial baskets, 1- or 2-person
- Remote-control operation
- Front-bumper stabilizer for 360° operation
- Hydraulic swivel for continuous rotation
- Capacity overload shutdown system
- Dunnage/tool boxes
- Air throttle
- Various mountings
- Special paint
- A-frame rear stabilizers
- Roofer's package
 - Pallet forks
 - Clamshell buckets
 - Hydraulic hose reel
 - Trash dumpster
 - Gravel hopper
 - Oil cooler for duty-cycle applications

MODEL 2284 LOAD RATING CHART

This capacity chart is for reference use only and must not be used for a specific serial number crane. Lifting off the main boom point while the swing-around jib is erected is not approved.

MEETS
ANSI B30.5
REQUIREMENTS

OUTRIGGERS AND STABILIZERS EXTENDED																															
Operating Radius		Load Rating 26' (7.92m) Boom			Load Rating 42' (12.80m) Boom			Load Rating 56' (17.07m) Boom			Load Rating 70' (21.34m) Boom			Load Rating 84' (25.60m) Boom																	
		Loaded Bm. Angle	Pounds	Kilograms	Loaded Bm. Angle	Pounds	Kilograms	Loaded Bm. Angle	Pounds	Kilograms	Loaded Bm. Angle	Pounds	Kilograms	Loaded Bm. Angle	Pounds	Kilograms															
4'	1.22	80°	44,000	19,958																											
6'	1.83	77°	34,600	15,695																											
8'	2.44	72°	27,800	12,610																											
10'	3.05	67°	23,350	10,591	77°	20,000	9,072																								
12'	3.66	62°	20,200	9,163	74°	17,860	8,101	79°	16,400	7,439																					
14'	4.27	57°	17,780	8,065	71°	15,660	7,103	76°	14,400	6,532	80°	13,320	6,042																		
16'	4.88	51°	15,870	7,199	68°	13,930	6,319	74°	12,780	5,797	78°	11,770	5,339																		
20'	6.10	38°	12,800	5,806	62°	11,400	5,171	70°	10,400	4,717	75°	9,570	4,341	78°	8,900	4,037															
25'	7.62				54°	9,230	4,187	64°	8,400	3,810	70°	7,710	3,497	74°	7,180	3,257															
30'	9.14				44°	7,630	3,461	58°	7,000	3,175	66°	6,410	2,908	71°	5,910	2,681															
35'	10.67				33°	6,260	2,839	52°	5,910	2,681	61°	5,410	2,454	67°	4,980	2,259															
40'	12.19				14°	4,500	2,041	45°	5,040	2,286	56°	4,630	2,100	63°	4,260	1,932															
45'	13.72							37°	4,260	1,932	51°	4,000	1,814	59°	3,670	1,665															
50'	15.24							26°	3,470	1,574	45°	3,460	1,569	55°	3,190	1,447															
55'	16.76										39°	2,960	1,343	51°	2,770	1,256															
60'	18.28										31°	2,430	1,102	46°	2,390	1,084															
65'	19.81										21°	1,920	871	41°	2,010	912															
70'	21.34													35°	1,620	735															
75'	22.86													27°	1,300	590															
80'	24.38													19°	990	449															
		650			295			400			181			300			136			250			113			200			91		

20
30
40
50
65
75
80

Deduction for Stowed Jib

JIB LOAD RATING IN LBS./KGS. WITH OUTRIGGERS AND STABILIZERS EXTENDED

Operating Radius		Jib Load Rating 26' (7.92m) Jib For All Boom Lengths			Jib Load Rating 46' (14.02m) Jib For All Boom Lengths		
		Loaded Bm. Angle	Pounds	Kilograms	Loaded Bm. Angle	Pounds	Kilograms
25'	7.62	79°	4,510	2,046	79°	3,100	1,406
30'	9.14	76°	3,890	1,765	77°	2,800	1,270
35'	10.67	74°	3,350	1,519	75°	2,520	1,143
40'	12.19	71°	2,900	1,315	72°	2,240	1,016
45'	13.71	68°	2,500	1,134	70°	1,980	898
50'	15.24	65°	2,170	984	67°	1,750	794
55'	16.76	62°	1,870	848	65°	1,550	703
60'	18.23	59°	1,520	689	63°	1,370	621
65'	19.81	56°	1,240	562	60°	1,210	549
70'	21.34	52°	980	445	57°	1,050	476
75'	22.86	49°	760	345	54°	850	386
80'	24.38	45°	570	258	51°	680	308
85'	25.91				48°	520	236
90'	27.43						

INFORMATION: Deductions must be made from rated loads for stowed jib, optional attachments, hooks, and load blocks (see deduction chart). Weights of slings and all other load handling devices shall be considered a part of the load.

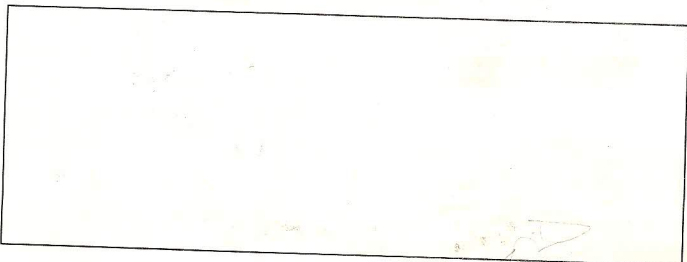
Deductions From Rated Loads For Manitex Supplied Load Handling Devices		
Hanger Sheave	50 Lbs.	(23 Kgs.)
Overhaul Ball	120 Lbs.	(54 Kgs.)
Single Sheave Load Block	280 Lbs.	(127 Kgs.)
Double Sheave Load Block	350 Lbs.	(159 Kgs.)
Triple Sheave Load Block	380 Lbs.	(172 Kgs.)
Hose Reel	140 Lbs.	(64 Kgs.)
Swing-Around Jib	See load chart	



MANITEX, INC.

A Subsidiary of The Manitowoc Company, Inc.

4300 Acapulco Avenue ■ McAllen, Texas 78503
Telephone: 210-630-2690 ■ Telefax: 210-630-2695



Because of continuing improvements, Manitex reserves the right to change product specifications without notice.

Form 2506-1092

Printed in U.S.A.

©1992 Manitex

WARNING: Before operating any Manitex crane, the operator must read and understand the owner's manual and other instructions for a specific serial number crane. This chart is only a guide. The notes and warnings are for illustration only and cannot be used to operate a crane.

The operating radius shown in the jib load rating chart is for fully extended boom only. When boom is not fully extended, use only loaded boom angle to determine load rating of jib. Do not rely on capacity-alert system when lifting from jib.

Main boom load ratings above the heavy line are based on a constant hoist cylinder pressure, machine structural competence, and do not exceed 85% of tipping. Jib load ratings above the heavy line are based only on machine structural competence and do not exceed 85% of tipping.

DO NOT OPERATE A MANITEX TRUCK-MOUNTED CRANE OR ACCESSORIES WITHIN 10' (3.05m) OF LIVE POWER LINES.

Crane load ratings on outriggers are based on freely suspended loads with the machine leveled and standing on a firm uniform supporting surface. No attempt shall be made to move a load horizontally on the ground in any direction.